

## YOUR HYBRID WORKPLACE AUTHORITY

### HYBRID WORKING

The concept is not new and has been around for some time, but thanks to Covid-19 it's currently at the forefront of discussions in all organisations, making it clear to businesses they need to rethink how their workplaces, ways of working and technology are put together.

We also know that achieving success in the Hybrid work environment isn't achieved by simply hiring an architect or using funky furniture with cutting-edge technology. You need to attract, and even more importantly retain quality talent, helping your people perform at their best.

At iPWC we leverage proven, evidence-based designs founded in science and informed by psychology, that puts Hybrid to work for you. Who commands space is no longer prime currency, it's how you create the space to further your goals.

### iPWC WORKPLACE PARTNERSHIPS MEAN

- Attracting top talent
- Keeping that top talent
- Encouraging collaboration toward scaling faster
- Enabling innovation through stronger connections
- Facilitating increased productivity and performance
- Right-sizing your real estate

iPWC is the intersection of science, psychology and design.

iPWC is your caring, experienced and knowledgeable guide helping you to evolve the new way of working for your business, that means it's done right the first time.

Through engagement, iPWC creates the optimal workplace design where teams want to be, and identify any real estate rationalization opportunities using evidence-based methods.

But don't take our word for it. Ask our clients.

## OUR SERVICES



### WORKPLACE STRATEGY & DESIGN

We co-create flexible, cost effective and high performing workplaces that employees enjoy coming to and which enables them to do their best work.

- Space planning & test fits
- Utilisation studies
- Existing office reviews
- Employee surveys



### WORKPLACE CHANGE MANAGEMENT

We successfully help introduce new ways of working by navigating the roadblocks of change that people don't even know exist.

- Hybrid working guides
- Change roadmap
- Workshop facilitation
- Leadership skills



### REAL ESTATE STRATEGY

We help right size your real estate through deep engagement analytics and forecasting that takes into account the new ways of working.

- Hybrid space reductions
- Existing office review
- Hub & spoke strategies
- Business case support

We are fortunate to work with leading businesses in all corners of the globe. As a result of delivering exceptional results throughout the UK, US and Middle East, we've earned the privilege to align with companies of all sizes across countless industries.





### DAVID GEORGE MANAGING DIRECTOR

David has been an occupier specialist for all of his career; firstly at the BBC where he led many major developments and afterwards as an industry leading consultant.

07802 158 357  
david.george@ipwc.co.uk

OUR OFFICES

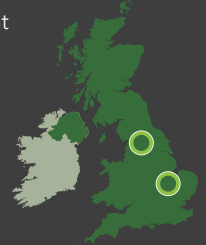


### MARK BRADSHAW TECHNICAL DIRECTOR

Mark's skills are in the development of property and workplace solutions for large organisations, providing a leading role in the delivery of rationalisation and change activities.

07824 472 893  
mark.bradshaw@ipwc.co.uk

OUR OFFICES

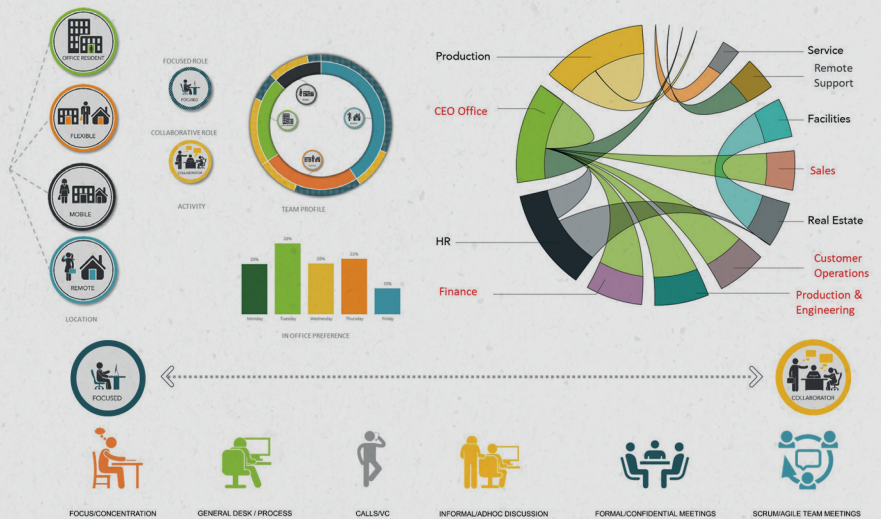


## WORK IS NOT A PLACE. WORK IS WHAT YOU DO.

We improve how your company works. Whether it's smart, hybrid or agile working we help businesses like yours create high performing workplace designs, successfully change your way of working and rationalise your real estate.

## WEX ENGAGEMENT TOOL

At the core of our Workplace strategy methodology lies the WEX engagement tool. This portal has global capacity and facilitates a deep dive engagement across your entire workforce (one of the keys to success in any change program) collating data across a wide range of activities, tasks, interactions, collaboration and other key metrics in the way work is done. This rich data is presented on an interactive online dashboard. Along with management and leadership interviews and workshops it informs the configuration, design, amount of space needed. It also reveals working preferences, collaboration mapping and the level of remote and office working in a team by team basis. This results in an evidence based change plan, workplace and real estate strategy.



## KEY BENEFITS OF OUR APPROACH

- Employees engage in the process which leads to successful adoption and higher attendance
- Creates employee 'personas' - modelling remote, hybrid and office workers
- Discover how much space you really need
- Know what and how many worksettings you need to create the best office design
- Evidential approach that supports decision making
- Map employee collaboration to improve interaction and knowledge exchange

## THE KNIGHT INDEX: KI

We use world leading psychological science to improve your organisational performance.

Would you like to know which teams in your business need most support when it comes to successfully adopting hybrid working?

Do you want to know what's holding back your workforce?

Would you like to discover what management and leadership skills require improvement to help your people become top performers?

Would you like to know how to improve performance?

How about a detailed analysis of your employees with actionable insights for areas of improvement?

